



Basic Report Operations

Module FG 0104

Search for text in the presentation

Presentation script

Presentation thumbnails

Presentation outline



Presentation toolbar

PDF attachment

Purpose

In this module you will learn:

- Learn how to load and view summary data using the Report Viewer

Objective

Upon Completion of this module, you will be able to:

- Access the Report and Model Manager from FabGuard Web and FabGuard IPM
- View defined and modified Reports
- Drill down to time series data
- Search Report and Model folders

Outline

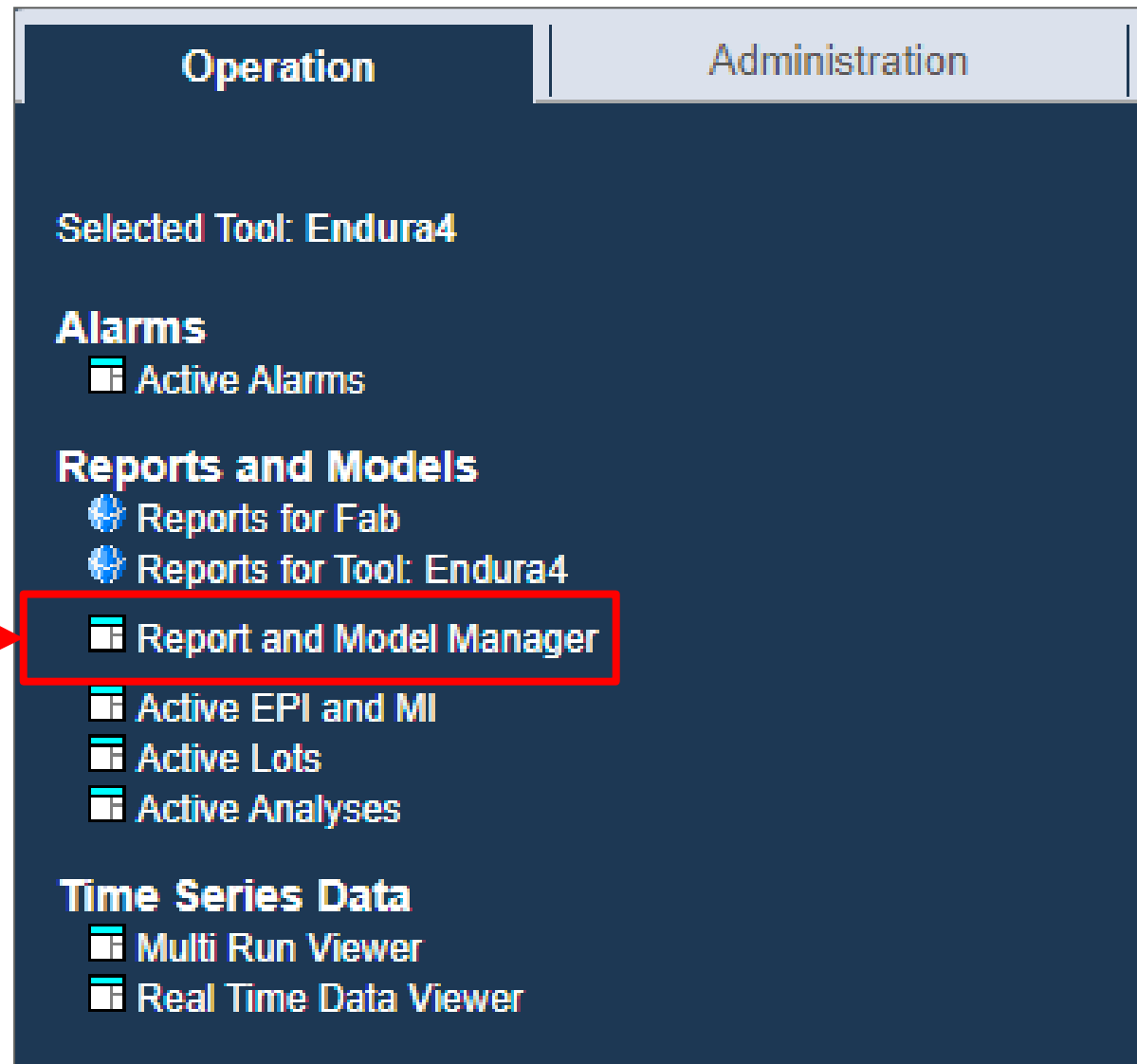
- 1** Access the Report and Model Manager
- 2** View a defined Report
- 3** The data plot
- 4** View a modified Report
- 5** Find a Report

1

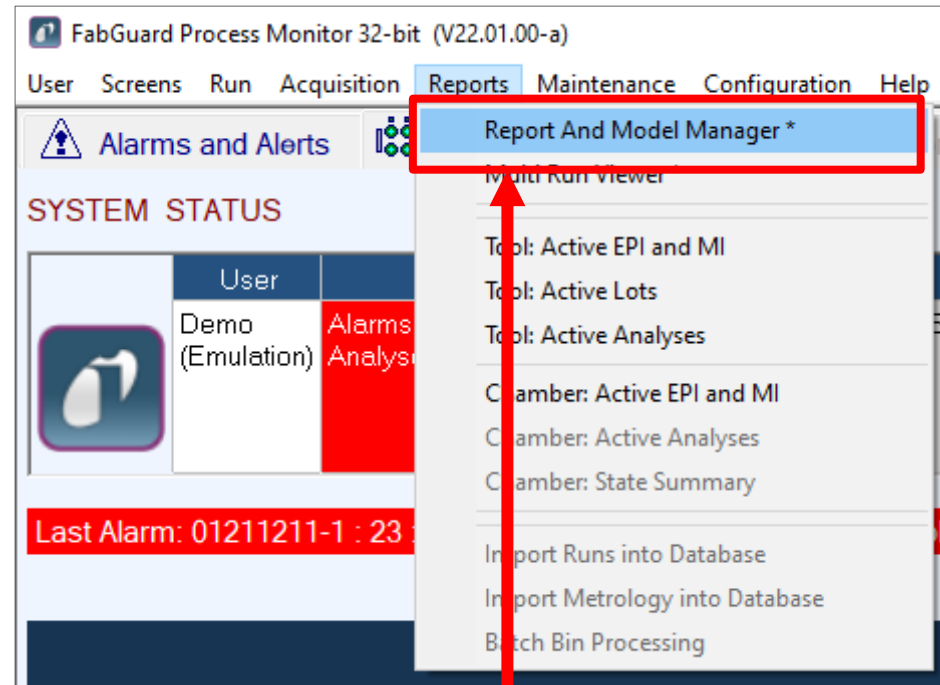
Access the Report and Model Manager

Accessing the Report and Model Manager from FabGuard Web

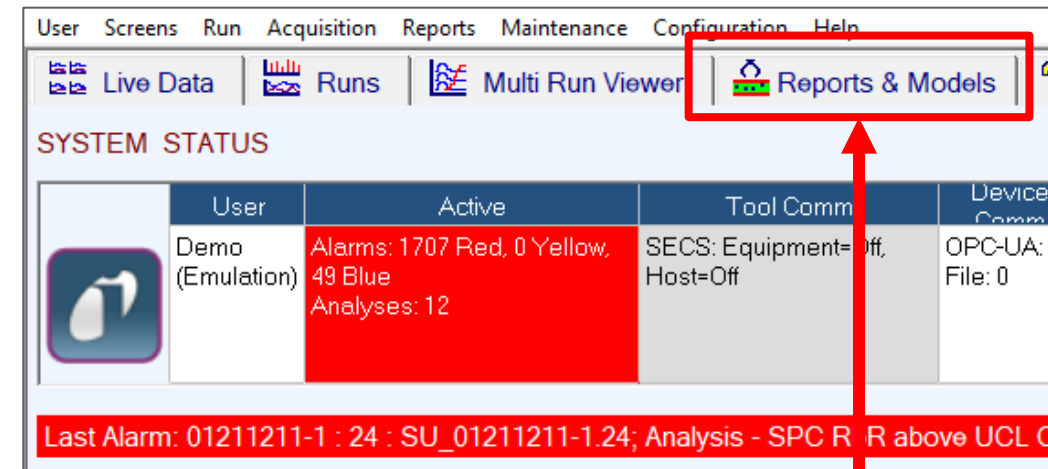
From the
Operation tab,
click **Report and
Model Manager**.



Accessing Active Alarms from FabGuard IPM



A – From the **Reports** menu, click **Report and Model Manager**.



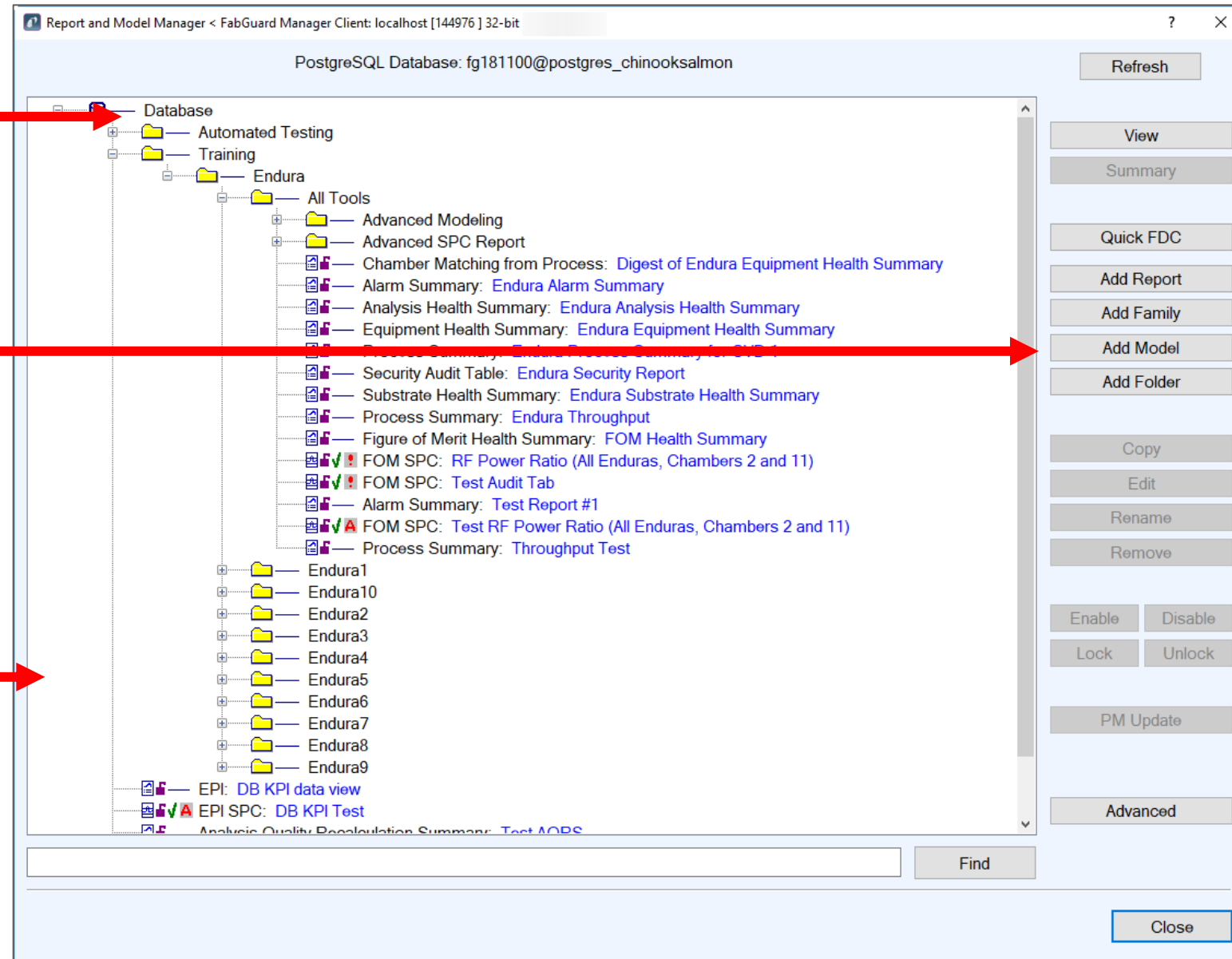
B – Click the **Reports & Models** tab.

Report and Model Manager Screen

Report and Model Tree

Controls

Report Search

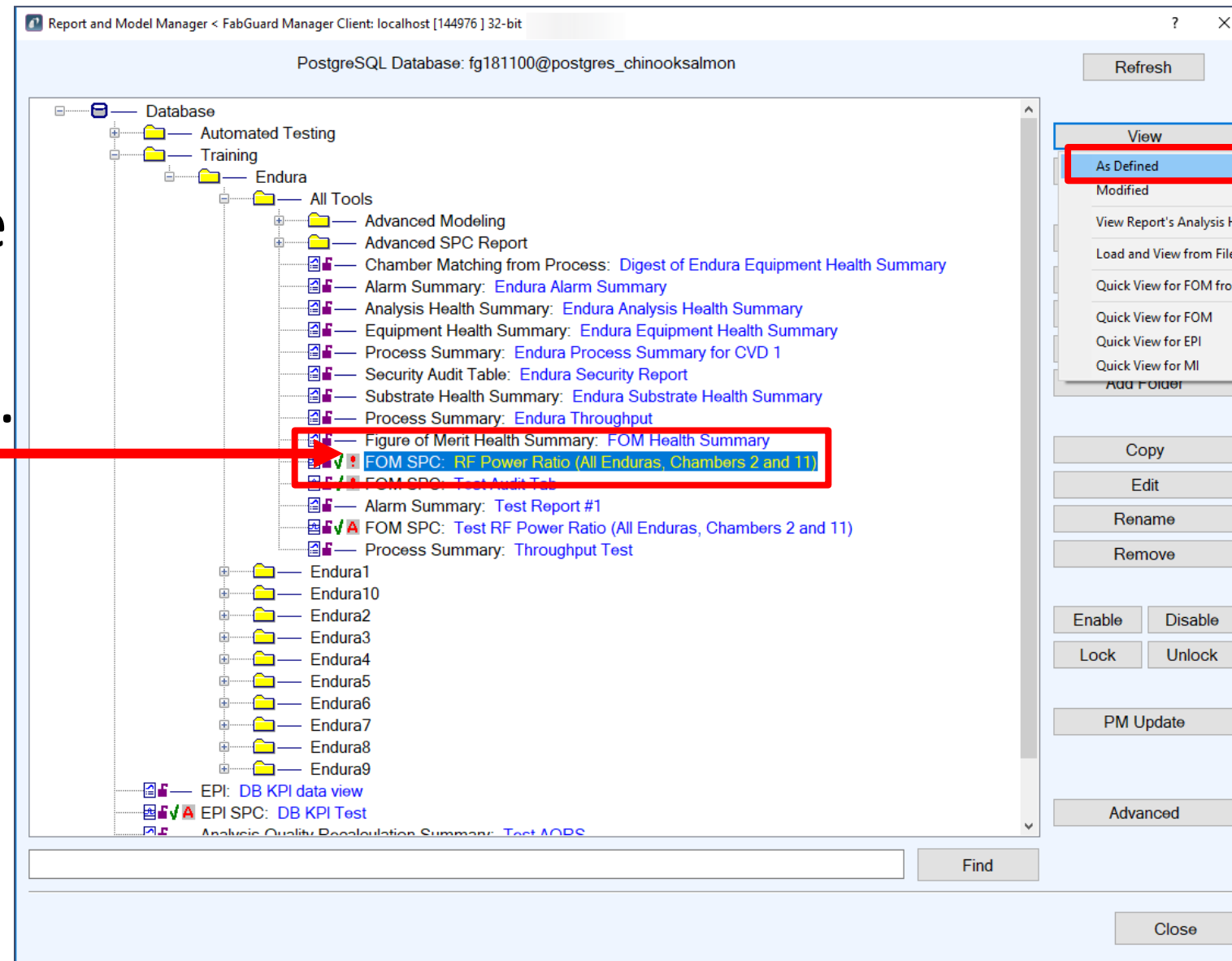


2

View a Defined Report

Viewing a Defined Report

1- Navigate the folder tree and select a Report.



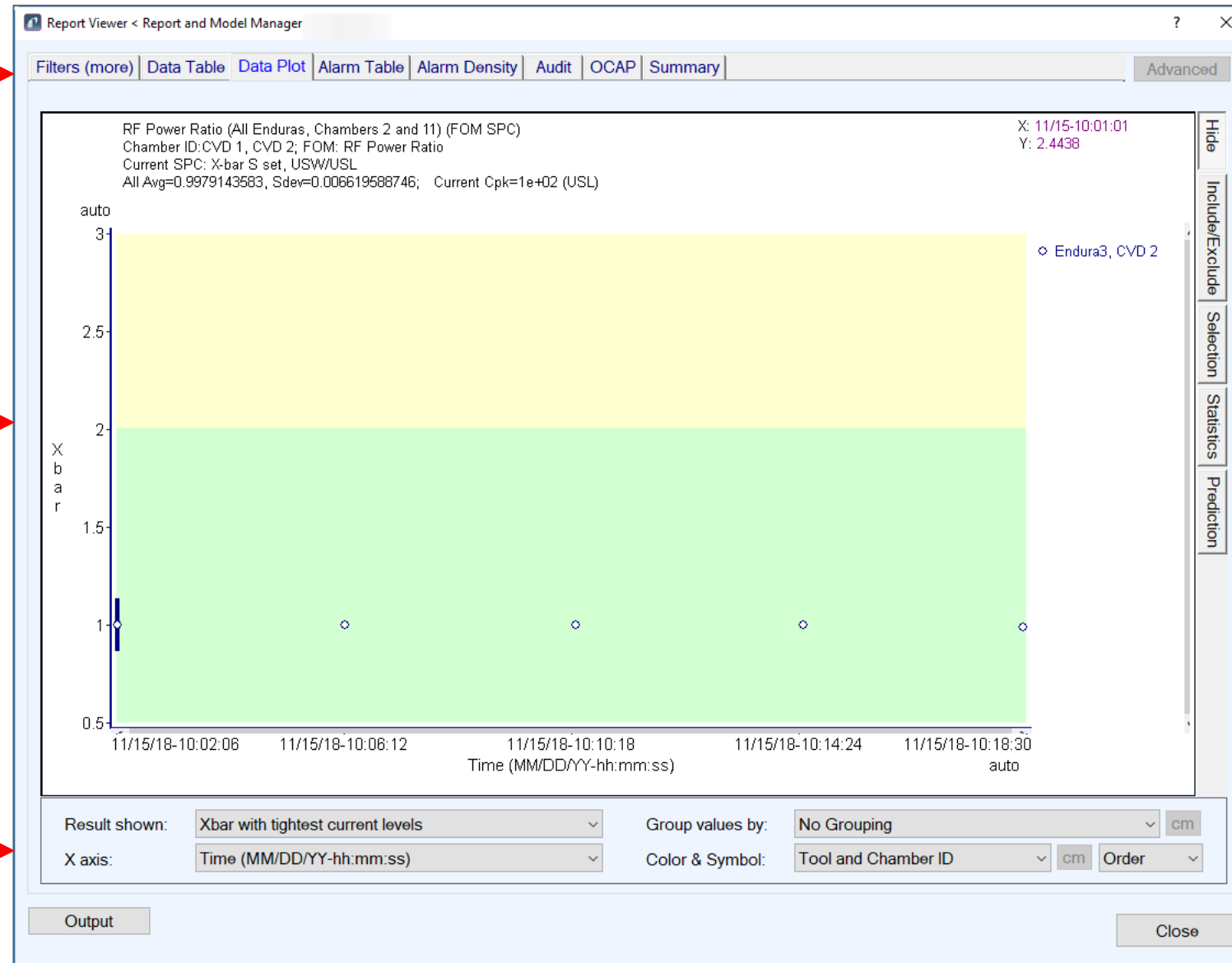
2- Click **View >> As Defined.**

Loading Runs Using the Database

Data View Tabs

Data Plot

Plot Controls

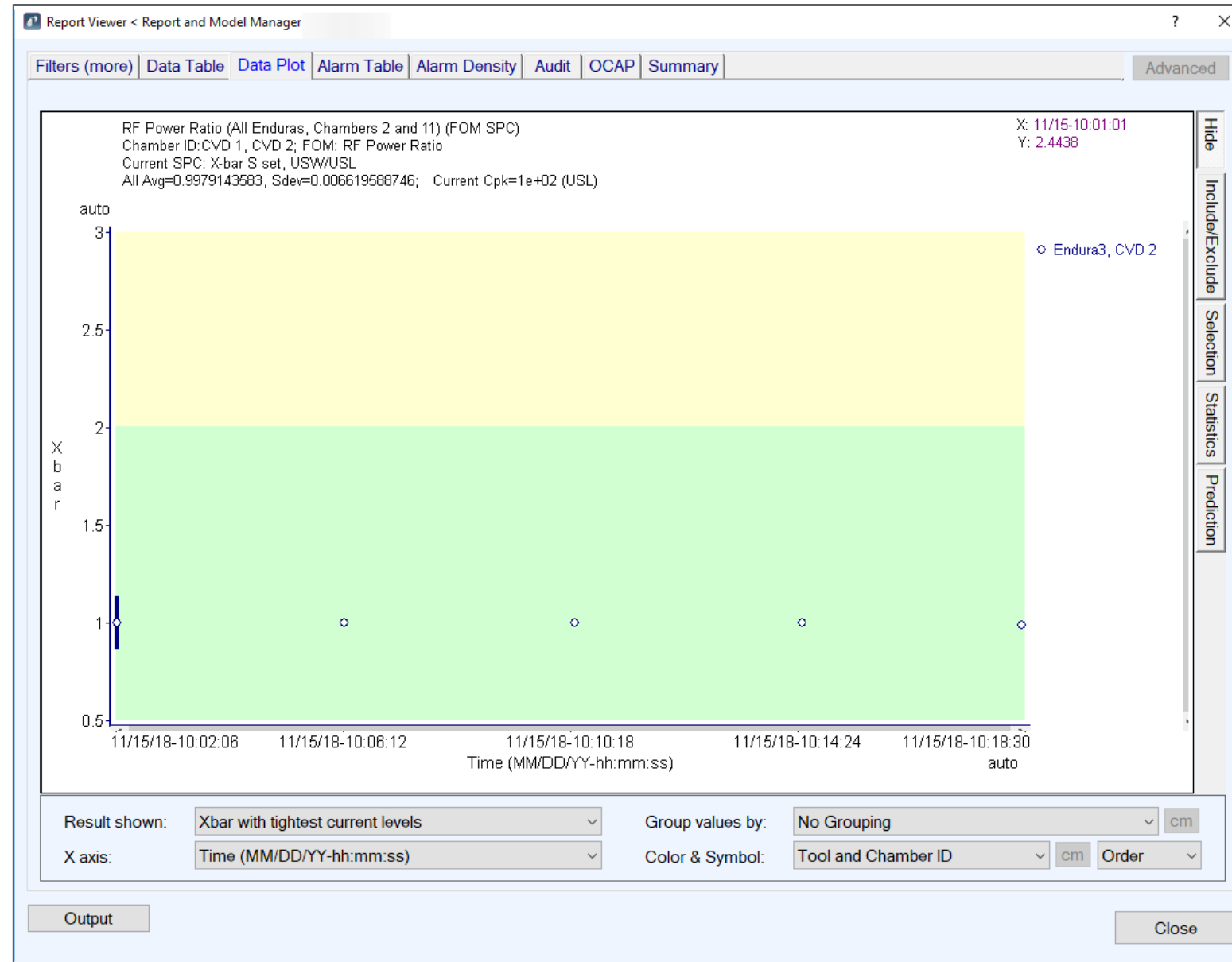


3

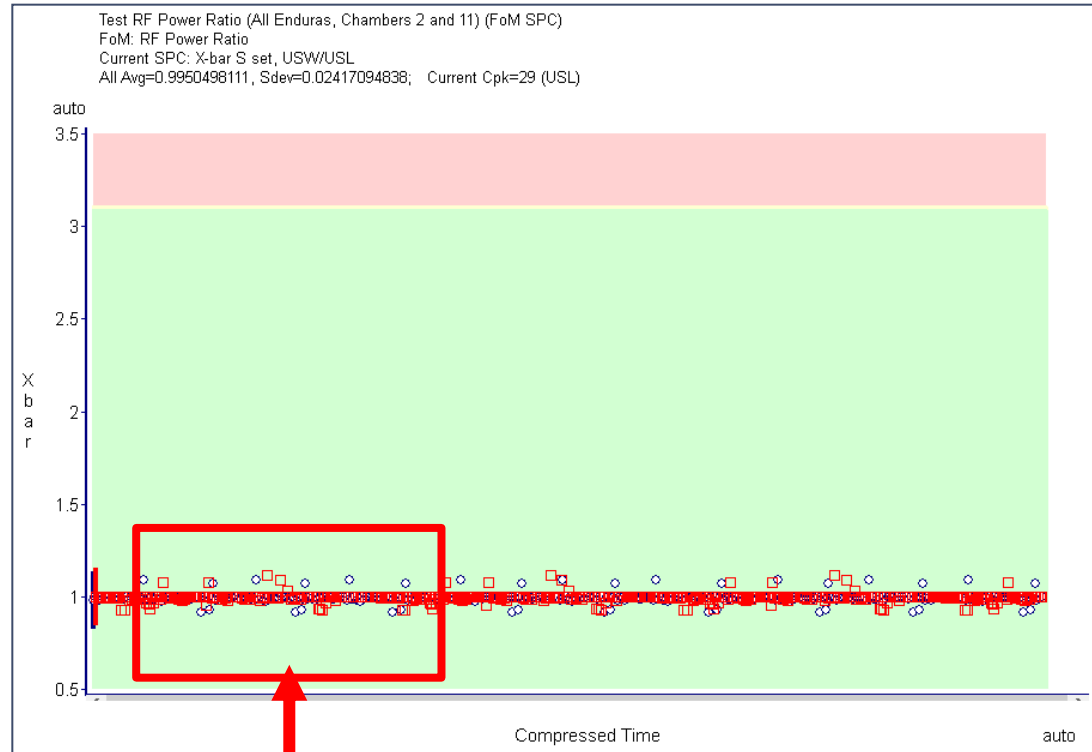
The Data Plot

Full Screen Control

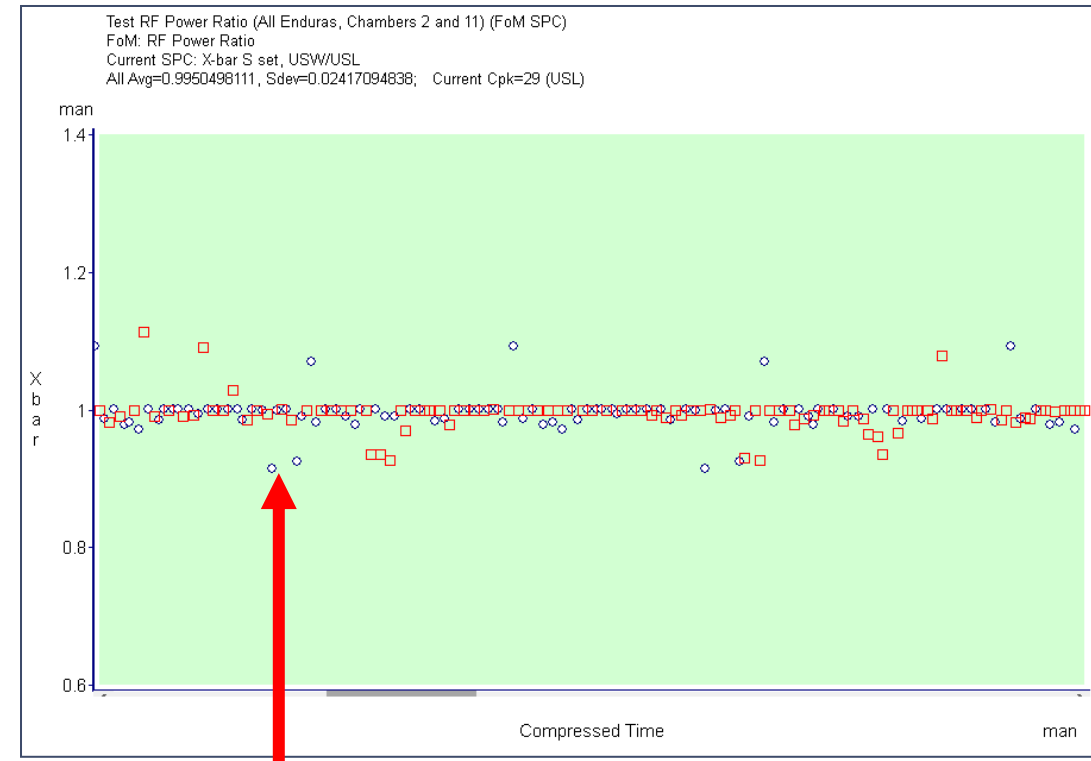
Double-click the title bar to transition to and from full screen



Plot Zoom



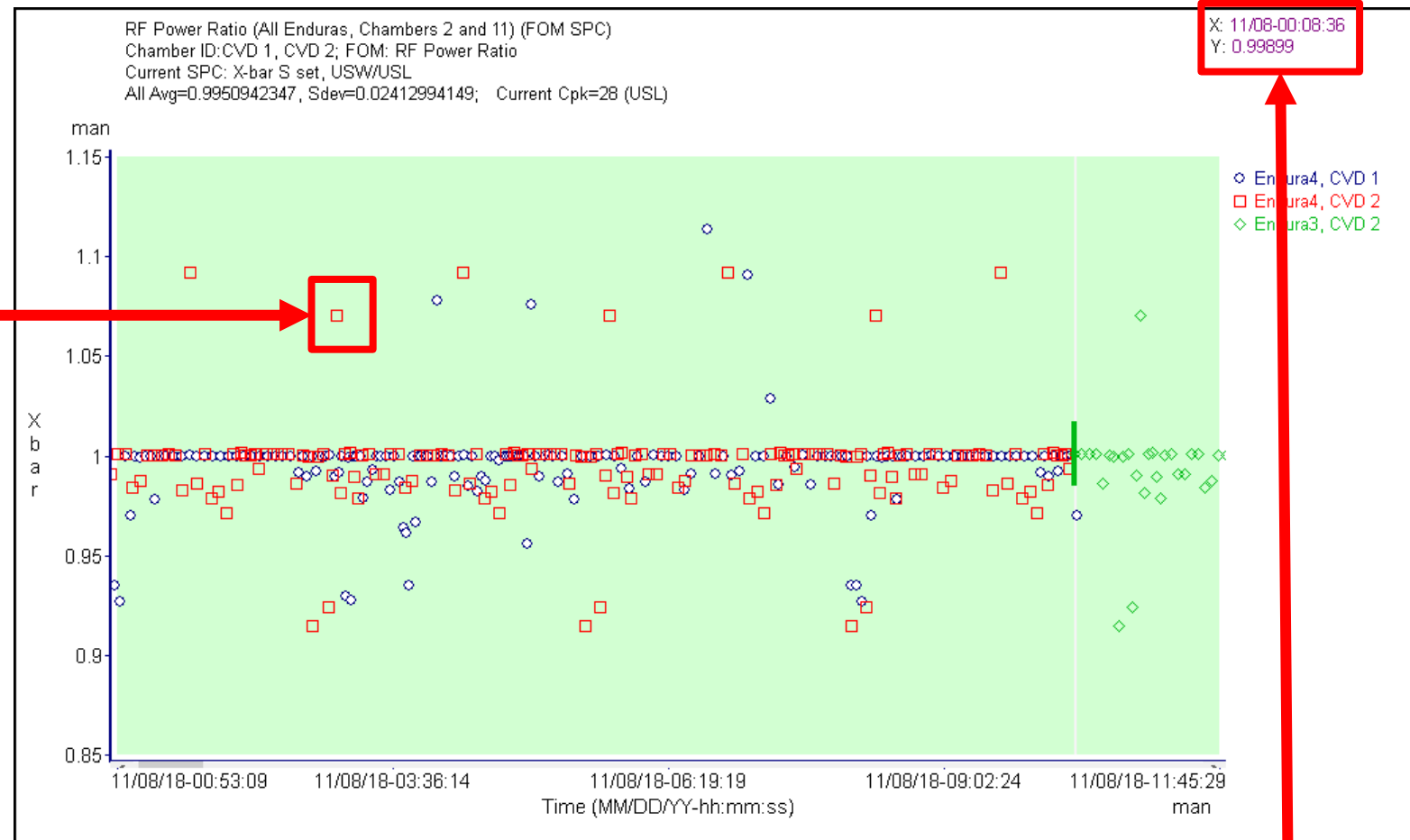
1 – Click and drag the mouse pointer over region.



2 – Double-click anywhere in the plot to return to the original view.

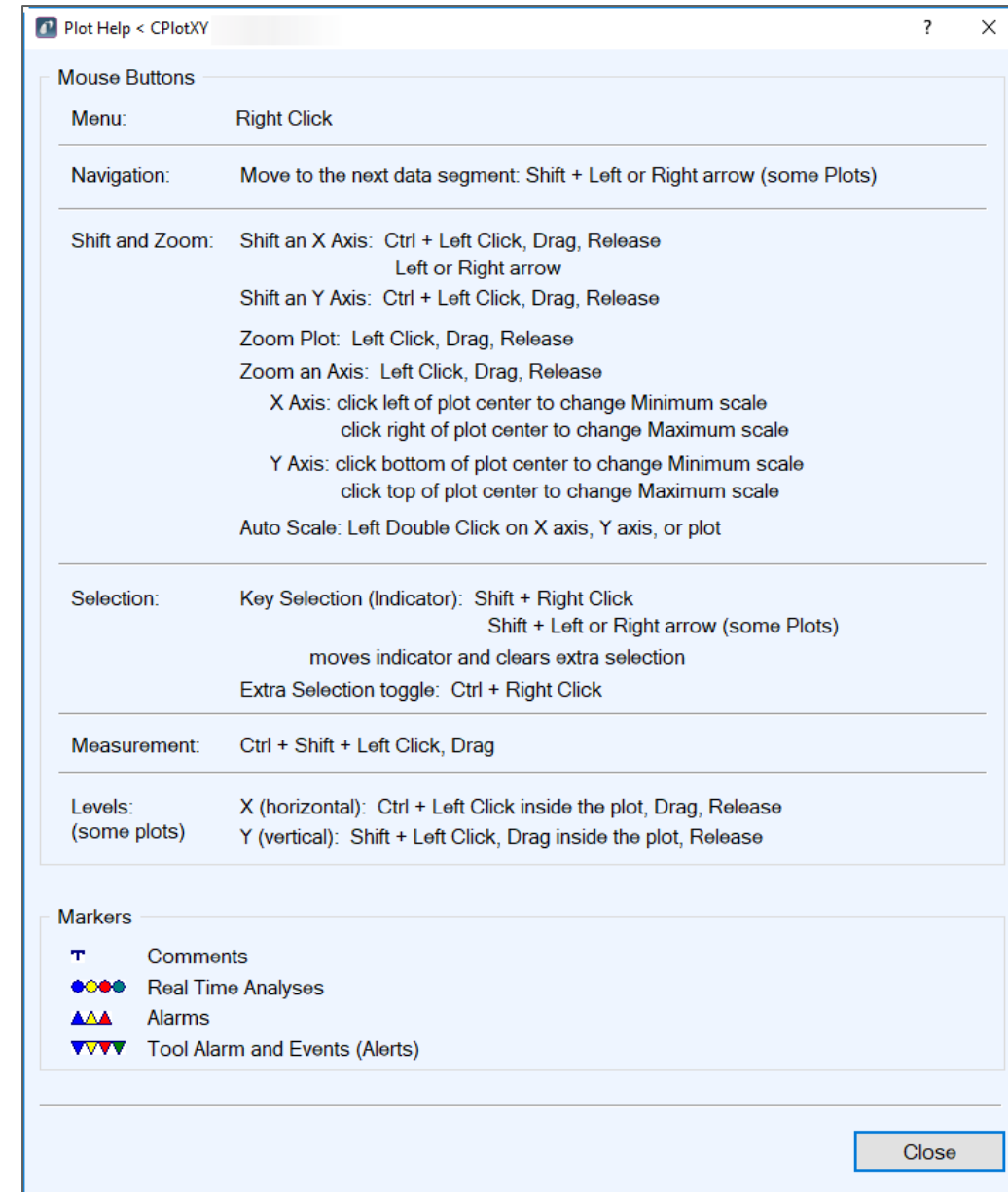
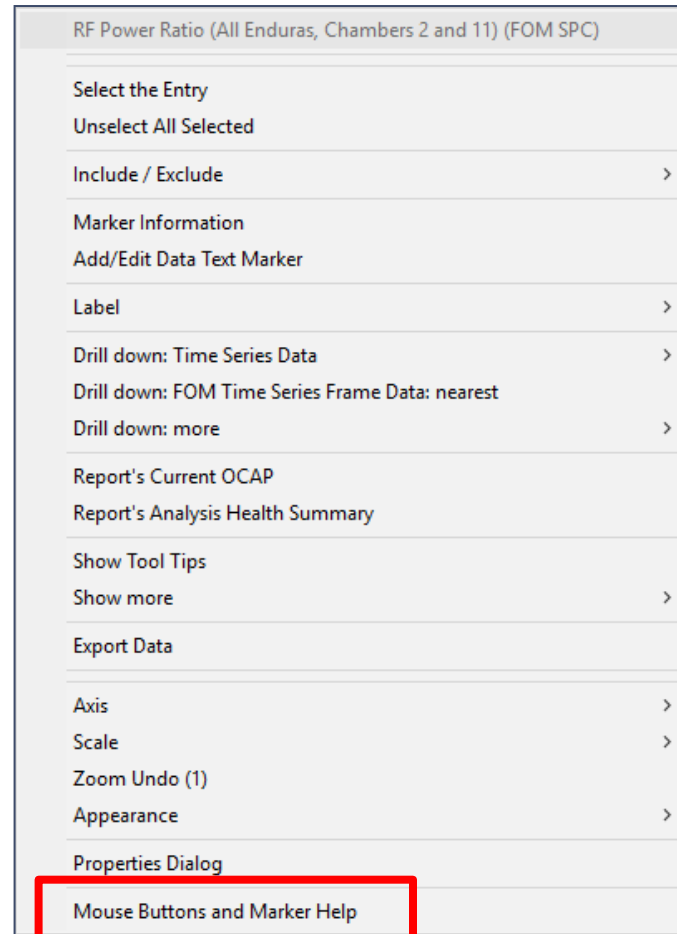
Plot Coordinates

1 – Mouse over a point on the plot.



2 – The X and Y-axis coordinates will be displayed in the upper right hand corner.

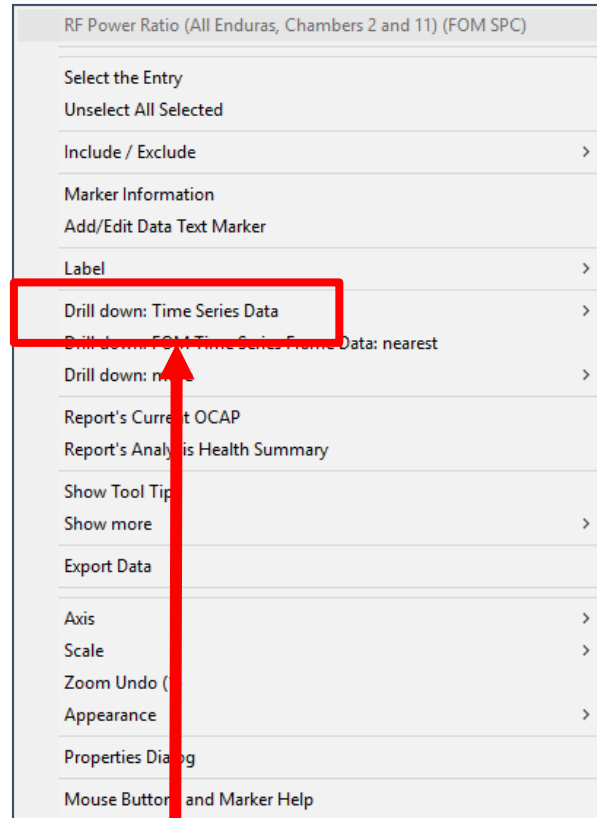
Plot Help



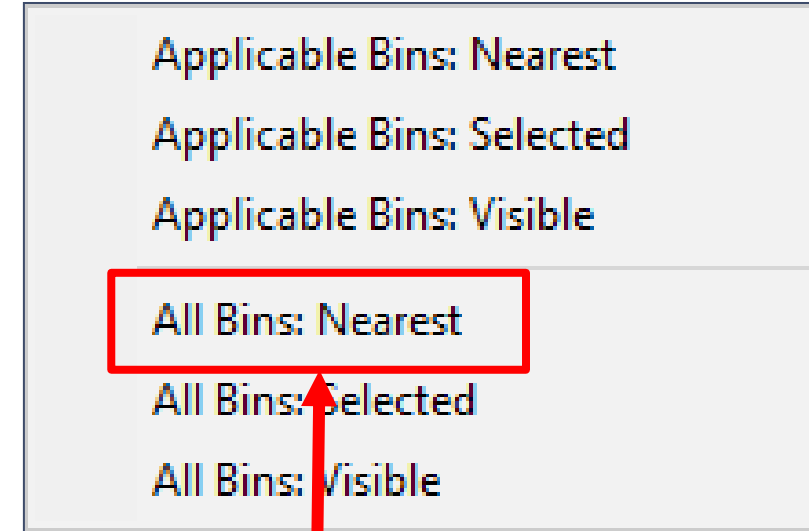
1 – Right-click anywhere in the plot.

2 – Select **Mouse Buttons and Marker Help**

Drill-Down to Time Series Data



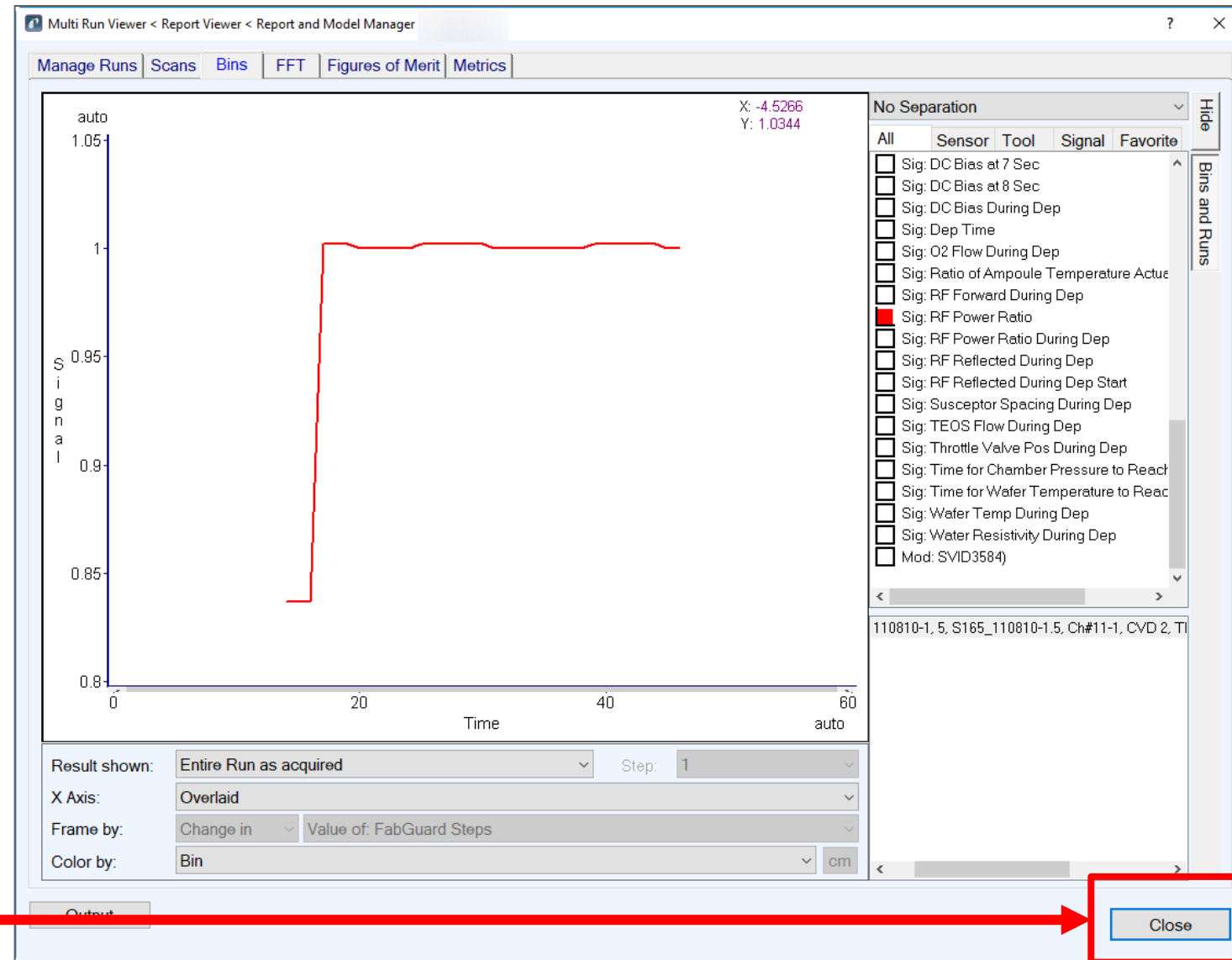
1 – Select **Drill down:
Time Series Data.**



2 – Select All
Bins: Nearest.

Drill-Down to Time Series Data

Click **Close** to return to the report view



Plot Color and Symbol



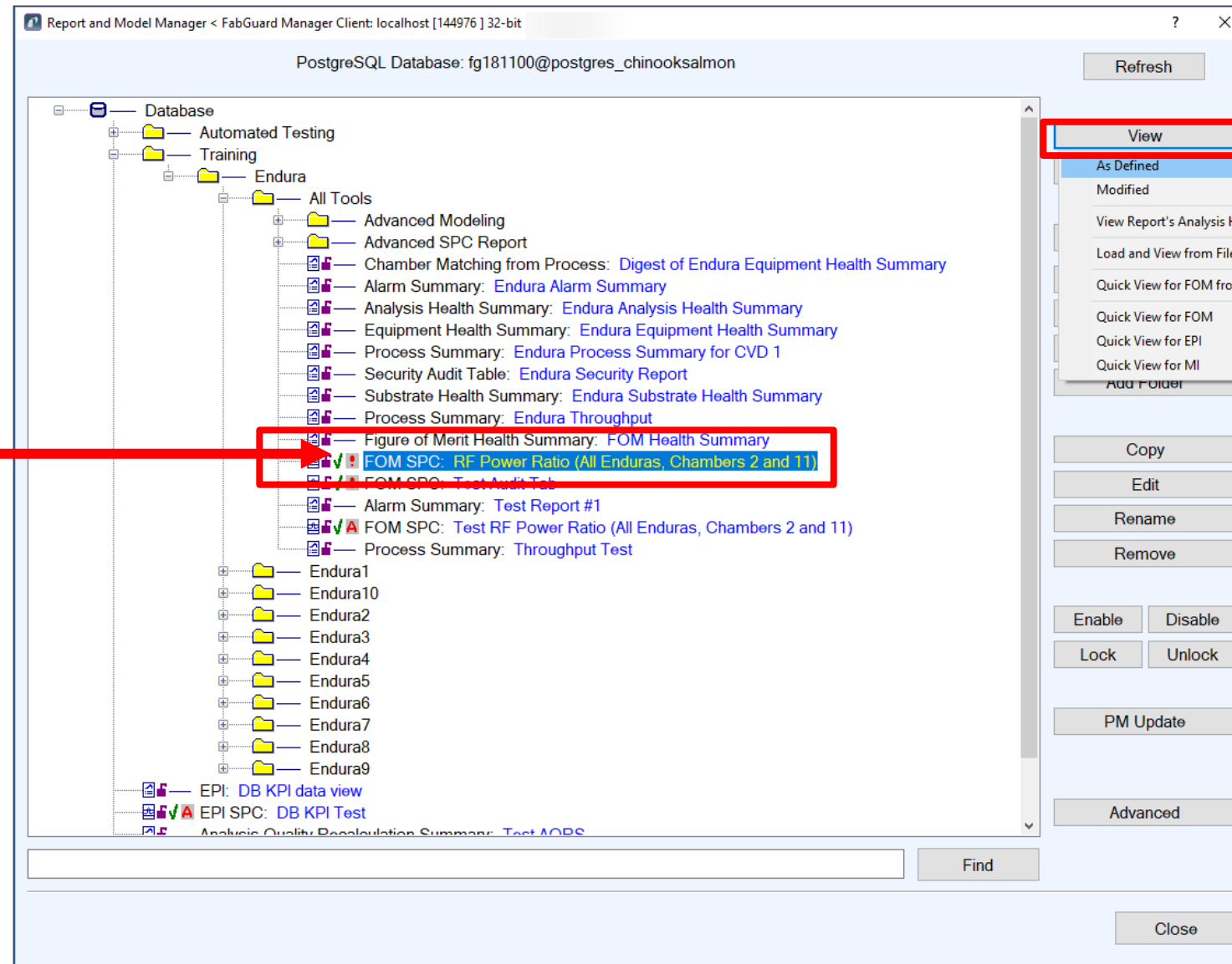
- None
- Any Change
- Tool and Chamber ID
- Tool, Chamber, Recipe ID
- Tool Group
- Tool ID
- Tool Description
- Tool Area
- Tool Type
- Chamber Number
- Chamber ID
- Chamber Description
- Sensor Type
- Lot ID
- Cassette ID
- Slot ID
- Substrate ID
- Part ID
- Layer ID
- Technology ID
- Operator ID
- Sequence ID
- Recipe ID
- Control Job ID
- Process Job ID

4

View a Modified Report

Viewing a Modified Report

1- Navigate the folder tree and select a Report.



2- Click **View >> Modified.**

Database Key Filters

Database Key Filters < Report and Model Manager

Report Name:
RF Power Ratio (All Enduras, Chambers 2 and 11)

Time Range:
Last 7 Days
11/ 8/2018 12:00:00 AM to 11/15/2018 11:59:59 PM

Sampling Probability (0.0001 to 1.0) or Total Entries (>= 2):
1

Tool ID:
* Get

Chamber ID:
CVD 1, CVD 2 Get

Chamber Number:
* Get

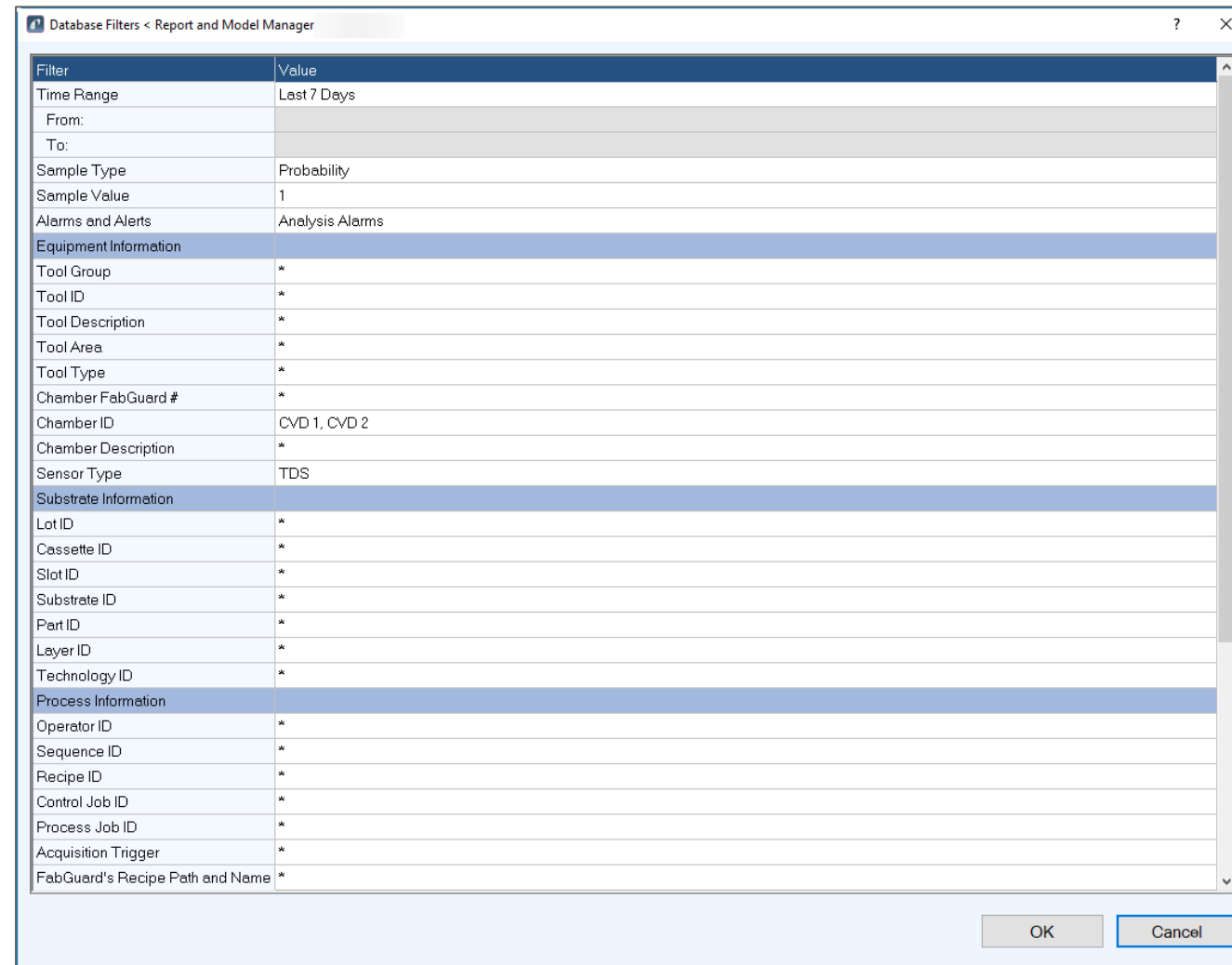
Alarms and Alerts:
Analysis Alarms

Show More Filters

OK Cancel

Database Filters

- 1 - Right-click a filter field and select **Get available from database**.
- 2 – Select the filter choices.
- 3 – Click **Replace** or **Append** to save the selection.
- 4 – Repeat steps 1-4 for any additional filters.
- 5 – Click **Ok** to load the data into the Report viewer.

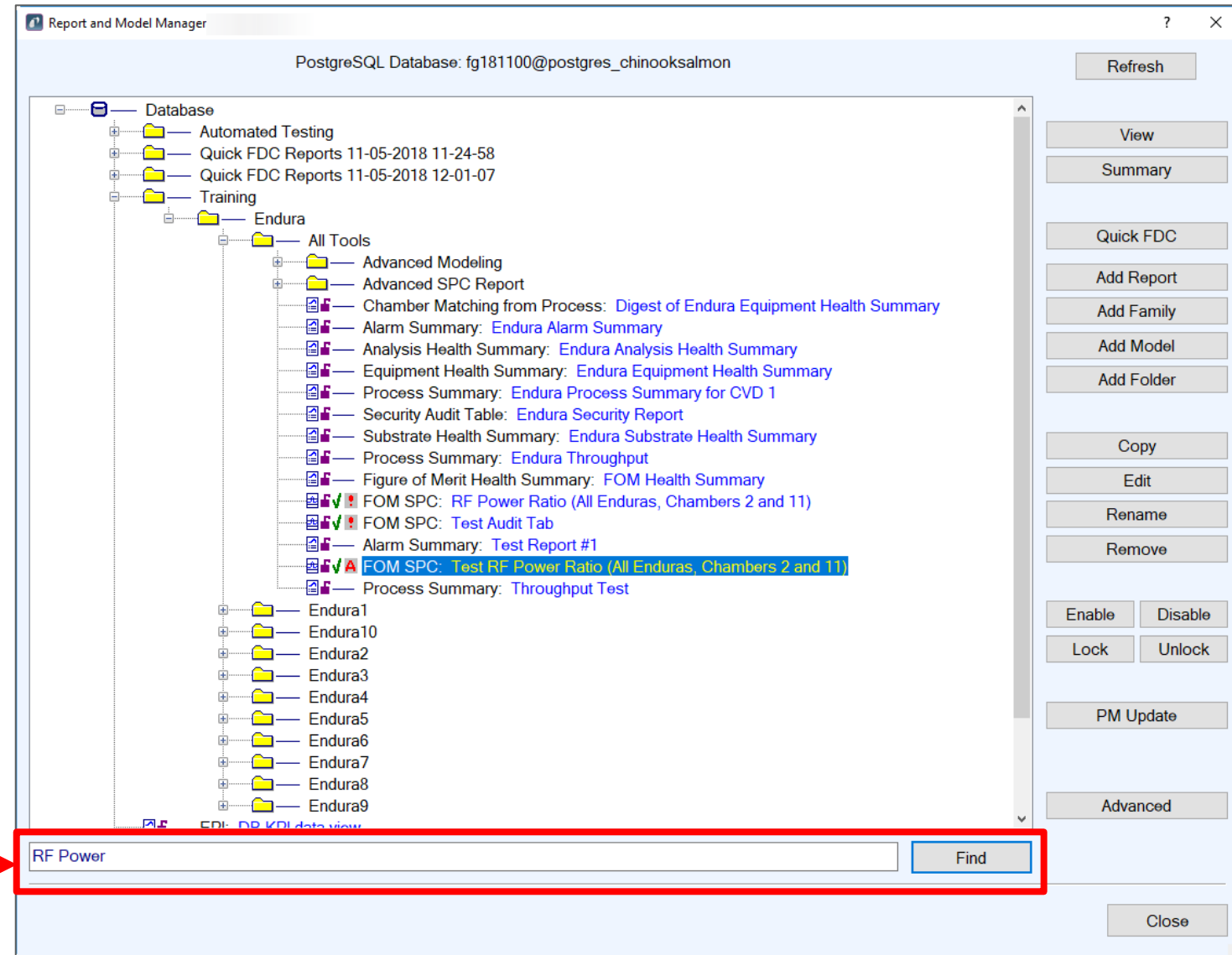


5

Find a Report

Find a Report

- 1 – Enter a search string. The * and ? wildcards may be used.
- 2 – Click **Find**.
- 3 – Click **Find** again to move to the next match in the report tree.



Module Summary

In this module, you have learned:

- How to access the Report and Model Manager from FabGuard Web and FabGuard IPM
- How to view defined and modified Reports
- How to drill down to time series data
- How to search Report and Model folders

Thank You!

You have completed the
Viewing Data module!

You may come back and review the
content of this module at any time.

Contact Information



If you have any questions about this module, please contact Michael Neel:

michael.neel@inficon.com

617.527.1219